

W

e

**WORLD SMART
SUSTAINABLE CITIES
ORGANIZATION**

G



OVERVIEW

The World Smart Sustainable Cities Organization (WeGO), with more than 200 members is a membership-based international association of local governments, smart tech solution providers, and institutions committed to the transformation of cities into smart sustainable cities through facilitating public-private partnerships (PPP). WeGO was founded by 50 member cities in 2010 as the World e-Governments Organization, hence our acronym. However, as the concept of smart city continued evolving, during the 4th General Assembly (2017) WeGO expanded its mandate and changed its name to the World Smart Sustainable Cities Organization. WeGO serves for its members as their international platform to improve the quality of life, innovate in the delivery of public services, and strengthen regional competitiveness.

Smart City Smart Citizen

VISION

Cities that ensure enduring economic, social, and environmental sustainability by:

- exploiting the power of digital technologies
- engaging city leaders and communities
- integrating across sectors and disciplines
- accessing investment for smart sustainable cities development

to improve efficiency of urban operation and services, quality of life, and economic prosperity and services for their communities.

MISSION

- WeGO promotes and facilitates the worldwide transformation of cities to smart sustainable cities.
 - WeGO is a global platform for cities and their partners to leverage their innovation potential, enhance their digital capabilities, promote digital ethics, and develop transformative solutions for smart sustainable cities.
 - WeGO fosters and improves international exchange, cooperation, project implementation, and learning amongst cities and with their partners.
-

WeGO'S PRIORITIES FOR 2024

HUMAN-CENTERED SMART CITIES

To build Human-Centered smart cities, inclusion has become one of the most important values in today's smart city development. Technology, despite causing the digital divide, can still be the driving force in reducing the gap and ensuring an inclusive digitalization of public services that benefit all people in sectors ranging from mobility, safety, welfare, environment, culture, and governance. WeGO will work towards the creation of an agenda that promotes the global efforts in building inclusive and Human-Centered cities.

INTEGRATING ESG FRAMEWORK INTO SMART SUSTAINABLE CITIES DEVELOPMENT

ESG (Environment, Social, Governance) is the concurring new norm intertwined with corporations and smart city development, WeGO stands to be a part of the green transition in cities and people's lives. WeGO will approach Smart City development by combining multiple aspects across the fields that access the social changes of the 4th Industrial Revolution, especially to transform cities into sustainable cities by investing in ESG (Environment, Social, Governance) aspects. Incorporating the dimensions of ESG, WeGO aims to promote ESG issues starting from business practices to socially profitable values that combine ICT with greater social inclusion and greater access to services of a city to meet the needs of governments, citizens, and businesses, prioritizing Environmental, Social, and Governance (ESG) criteria as a "socially responsible city."

DECENTRALIZATION AND REGIONAL APPROACH

The pandemic has highlighted the importance of cities and local governments as Smart City transformation drivers. Recognizing the constraints in the national level approach, the role of cities and local governments as transformation drivers to stimulate city-specific development and activate citizen participation is paramount. WeGO believes a regional approach focusing on local context is crucial to build regional consensus in finding solutions to challenges that cities and local governments face in Smart City development.

INCREASE PARTNERSHIPS FOR MORE INNOVATIVE FINANCING AND TECH SOLUTIONS

In line with WeGO's vision of "exploiting the power of digital technologies" and "accessing investment for smart sustainable cities development", the organization will actively partner with tech and finance solution providers to provide more and improved programs and services to its members. With this new collaborative framework, the Secretariat will continue striving to engage with more public and private actors to expand on the Public-Private Partnership (PPP) model.



WeGO'S CORE PROGRAMS IN 2024

THE 2ND SEOUL SMART CITY PRIZE

This importance of the city's role and human centered smart city value stands at the heart of all WeGO programs and activities. The Seoul Smart City Prize is designed to promote an innovative yet inclusive smart city model that looks after underprivileged groups in the era of the Fourth Industrial Revolution. Efforts of city governments, corporations, and individuals to ensure inclusive smart sustainable development will be recognized in front of a global audience and winners will share their vision for leading the inclusive growth of the global community. The 2nd Seoul Smart City Prize ceremony will be held in October hosted in Seoul.

WEGO EXECUTIVE COMMITTEE MEETING 2024

The WeGO Executive Committee (EXCOM) is one of WeGO's main decision making bodies which convenes annually to review the Secretariat's activities and accomplishments in the preceding year and decides on key agenda items guiding the organization's direction for the future programs within the evolving smart city ecosystem. WeGO EXCOM members and invited partners will gather at the WeGO Executive Committee Meeting 2024 held in Almaty, Kazakhstan.

WEGO SUSTAINABLE SMART CITY CHAMPIONS

WeGO recruits youth from cities from all around the world to share knowledge and build consensus around the future of smart cities. By fostering knowledge exchange and building capacities of youth in the field of urban development, sustainability and smart cities through two phases, this flagship program will empower young urban leaders of tomorrow. Youth participants will be selected to partake in two phases to receive certificates.

PHASE 1 LECTURE SERIES: APPLY TO JOIN AN ONLINE LECTURE SERIES ON VARIOUS TOPICS IN SMART SUSTAINABLE CITY

PHASE 2 WORKSHOPS: ENGAGE IN INTERACTIVE GROUP WORKSHOPS CONDUCTED IN DIFFERENT PARTS OF THE WORLD TO DESIGN YOUR CREATIVE SMART CITY

WEGO SMART CITY INDEX IN PARTNERSHIP WITH IMD

WeGO in partnership with IMD, will recognize cities' efforts in human-centered smart city development through the Smart City Index Report 2024. The Index serves as a valuable benchmark for progress on openness, innovation, inclusivity and sustainability. The IMD Smart City Index is distinctive because it utilizes city-level data from the Human Development Index. This comprehensive approach considers various indicators, such as life expectancy, education, and income, offering a more holistic view of the quality of life for city residents, as opposed to country-level data. Using the measurements to capture human-centered smart city development, WeGO and IMD will work together to select a city to award as a Special Mention for the Seoul Smart City Prize, for which the ceremony will be held in October in Seoul.

WeGO SMART CITY DRIVER



WEGO ACTIVATOR

Diagnose your city's smart city development stage and learn how to improve.

Complete the WeGO Activator survey to find out where you are in smart city development and learn what solutions could be applied to make your city even smarter.



SOLUTION FINDER

Search for the right smart city solutions.

- Join our flagship 'Solutions Meet Cities' matchmaking events or schedule an on-demand matchmaking meeting with a partner of your choice.
- Discuss and share your smart city plans with the WeGO network.
- Gain inspiration from smart city best cases from our WeGO members and partners.



PROJECT IMPLEMENTER

Reach your smart city goals with project implementation opportunities.

- Share your ready-made project proposal with WeGO and **establish direct project partnerships** within the WeGO network.
- Become a beneficiary city or solution provider of **WeGO Smart Sustainable City Feasibility Study Program**.
- Apply for **partner smart city funding programs** through consultation and support from WeGO.

WeGO MEMBERS | 202

as of December 2023



LOCAL GOVERNMENTS | 164

AFRICA | 27

Cameroon	Andek, Batibo, Tubah
Ethiopia	Addis Ababa
Ghana	Accra
Kenya	Nairobi
Mozambique	Maputo
Nigeria	Abuja, Calabar, Jalingo, Kaduna State, Sokoto State
Rwanda	Kigali
Senegal	Dakar
South Africa	Tshwane
Tanzania	Dar es Salaam
Uganda	Kampala
Zambia	Kasama, Lunte
Zimbabwe	Harare

EUROPE | 16

Belarus	Minsk
Belgium	Brussels
France	Paris
Germany	Berlin, Frankfurt
Netherlands	Rotterdam
Romania	Bucharest
Russia	Magas, Moscow, Vladivostok
Türkiye	Ankara, Antakya, Beyoğlu, Gaziantep, Malatya, Muğla

MIDDLE EAST & NORTH AFRICA | 29

Iran	Isfahan, Shiraz, Tabriz, Tehran
Iraq	Erbil
Morocco	Rabat
Oman	Muscat
Palestine	Hebron, Ramallah
Sudan	Khartoum Locality
Tunisia	La Marsa, Menzel Jemil, Tunis
United Arab Emirates	Abu Dhabi

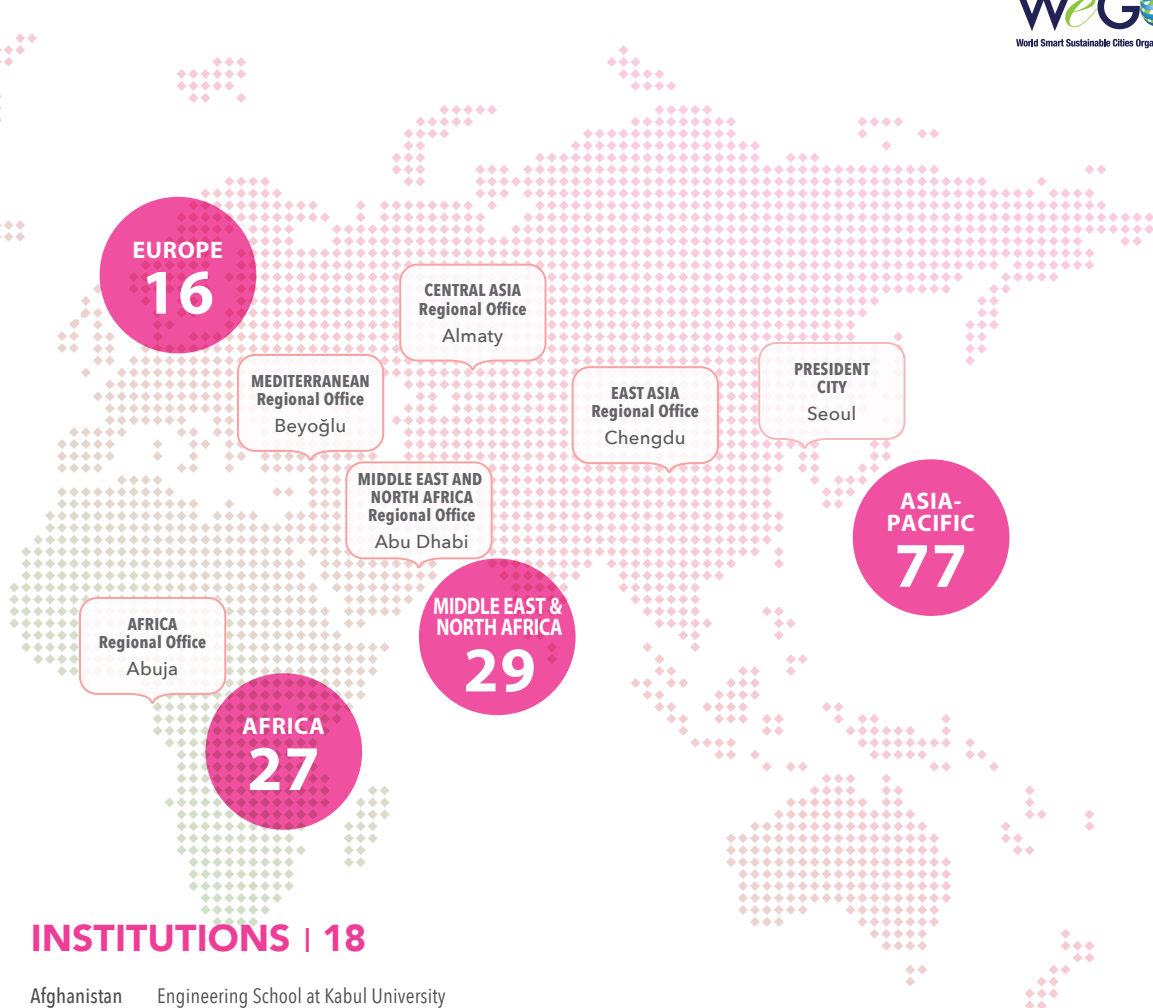
AMERICAS | 15

Argentina	San Antonio de Areco
Brazil	Porto Alegre, São Paulo
Costa Rica	Buenos Aires
Dominican Republic	Villa Tapia
Ecuador	Cuenca
Mexico	Coatzacoalcos, Mexico City
Paraguay	Asunción
Peru	Cusco, Lima, Urubamba
United States	Pittsburgh, San Francisco
Venezuela	Caracas

LATIN AMERICA
Regional Office
Cuenca

ASIA-PACIFIC | 77

Australia	Ryde
Azerbaijan	Baku
Bangladesh	Dhaka North, Dhaka South, Rajshahi City
China	Chengdu, Dujiangyan, Hong Kong SAR, Ningbo, Zhejiang Province
Fiji	Suva
India	Agra
Indonesia	Bandung, Batam, Baubau, Jakarta, Kepulauan Riau, Serang Regency
Japan	Saga Prefecture
Kazakhstan	Almaty, Astana
Kyrgyzstan	Bishkek
Korea	Anyang, Gimpo, Goyang, Jeju, Sejong, Seongnam, Seoul
Malaysia	Penang Island, Seberang Perai
Mongolia	Altai, Choibalsan, Erdenet, Sainshand, Ulaanbaatar
Nepal	Belbari, Bhadrapur, Bharatpur, Birgunj, Dharan, Dhulikhel, Itahari, Kanakai, Kathmandu, Patharishanishchare, Pokhara, Ramgram, Ratuwamai, Shivasatakshi, Sunawarshi, Sundarharaicha, Sunwal, Tarakeshwar
New Zealand	Wellington
Pakistan	Islamabad, Peshawar
Philippines	Baguio, Cauayan, La Union, Makati, Manila, Quezon City, San Fernando La Union
Sri Lanka	Dambulla, Galle, Matale, Sri Jayawardenapura Kotte
Thailand	Bangkok
Uzbekistan	Tashkent, Chirchik
Vietnam	Da Nang, Ha Noi, Thua Thien Hue



INSTITUTIONS | 18

Afghanistan	Engineering School at Kabul University
Botswana	Botswana Communications Regulatory Authority
Germany	FIWARE Foundation
Ghana	National Information Technology Agency (NITA)
India	Enactus IIT Delhi
Korea	Korea Green Foundation, Korea Internet and Security Agency (KISA), Seoul Digital Foundation (SDF), Seoul Housing & Communities Corporation (SH), Seoul Tourism Organization (STO)
Mongolia	Healthy City Network of Mongolia (HCNM)
Nigeria	African Smart Cities Innovation Foundation (ASCIF), Digital Collaborative Platform, National Information Technology Development Agency (NITDA)
Sudan	National Information Center (NIC)
Switzerland	Solar Impulse Foundation
Tunisia	Bizerte 2050
Uganda	National Information Technology Authority (NITA-U)

CORPORATIONS | 20



PARTNERS



MEMBERSHIP GUIDELINES

MEMBERSHIP CATEGORIES

LOCAL GOVERNMENTS

- Cities and Other Municipalities
- Districts and Other Sub-Municipalities
- States, Provinces, and Other Regions

CORPORATIONS

- Multinational Corporation (MNC)
- Small and Medium-Sized Enterprises (SMEs)
- Start-ups

INSTITUTIONS

- Associations and Alliances
- National and Subnational Public Agencies
- Academic Institutions
- Non-profit Organizations

APPLICATION PROCESS



ANNUAL FEES

LOCAL GOVERNMENTS

GDP per capita (USD)	Population ('000)	0 - 49	50 - 199	200 - 299	300 - 599	600 - 999	1,000 - 1,999	2,000 - 3,999	4,000 - 6,999	7,000 - 9,999	10,000+
0 - 999		400			500		600		700		
0 - 1,999		400		500		600		700		800	
2,000 - 3,999		400	450	500	750	1,000	1,250	1,500	1,750	2,000	2,250
4,000 - 5,999		500	500	700	1,000	1,300	1,600	1,900	2,200	2,500	3,000
6,000 - 7,999		900	1,200	1,500	2,000	2,500	3,000	3,500	4,000	4,500	5,000
8,000 - 9,999		1,600	1,800	2,000	2,500	3,000	3,500	4,000	4,500	5,000	5,500
10,000 - 14,999		2,500	3,000	3,500	4,000	4,500	5,000	5,500	6,000	6,500	7,000
15,000 - 19,999		3,500	4,000	4,500	5,000	5,500	6,000	6,500	7,000	7,500	8,000
20,000+		4,000	5,000	6,000	6,500	7,000	7,500	8,000	8,500	8,500	10,000

CORPORATIONS

Category	Annual Membership Fee (USD)
Corporate Members	More than 50 employees: USD 2,000
	Less than 50 employees: USD 1,000

INSTITUTIONS

Category	Annual Membership Fee (USD)
Institutional Members	More than 50 employees: USD 2,000
	Less than 50 employees: USD 1,000

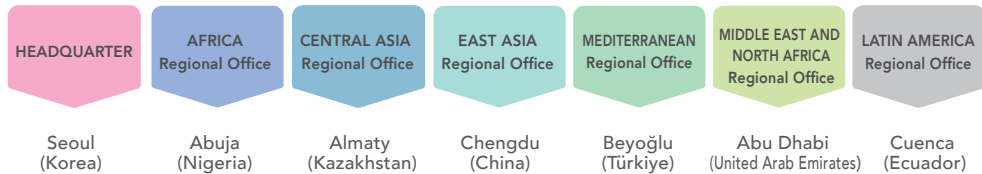
* GDP per Capita (PPP) is determined by the latest available international financial statistics published by the International Monetary Fund (IMF) while population and the number of employees are determined by the official statistics provided by the entity when joining WeGO.

GOVERNANCE (Term 2023-2026)



THE SECRETARIAT AND REGIONAL OFFICES

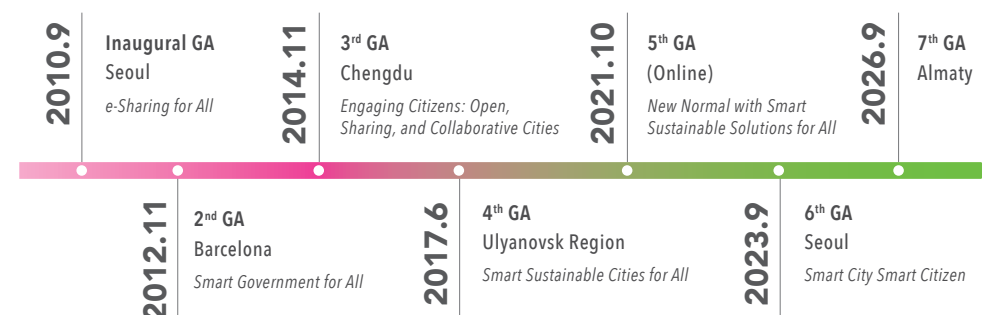
The WeGO Secretariat is located in Seoul, the President City of WeGO. It is supported by six (6) Regional Offices in advancing the Organization's mission in their respective regions.



WeGO ACTIVITIES



WeGO GENERAL ASSEMBLIES (GA)





World Smart Sustainable Cities Organization

FOLLOW US



WeGovOrg



WeGovOrg



WeGovOrg



World Smart Sustainable Cities Organization



<https://we-gov.org/>



JOIN US

WeGO SECRETARIAT

7F Seoul Global Center, 38 Jongro, Jongno-gu

Seoul, Republic of Korea, 03188

Telephone: 82-2-720-2935

Fax: 82-2-720-2939

Email Address: secretariat@we-gov.org

