



**WORLD SMART  
SUSTAINABLE CITIES  
ORGANIZATION**



---

## OVERVIEW

The World Smart Sustainable Cities Organization (WeGO), established by 50 founding members in 2010, is an international association of city and local governments, smart tech solution providers, and national and regional institutions committed to the transformation of cities into smart sustainable cities through facilitating public-private partnership (PPP).

WeGO has more than 200 members around the world and serves as their international platform to improve the quality of life, innovate in the delivery of public services, and strengthen regional competitiveness.

---

# *Smart Sustainable Cities for All*

## VISION

Cities that ensure enduring economic, social, and environmental sustainability by:

- exploiting the power of digital technologies
- engaging city leaders and communities
- integrating across sectors and disciplines
- accessing investment for smart sustainable cities development

to improve efficiency of urban operation and services, quality of life, and economic prosperity and services for their communities.

---

## MISSION

- WeGO promotes and facilitates the worldwide transformation of cities to smart sustainable cities.
  - WeGO is a global platform for cities and their partners to leverage their innovation potential, enhance their digital capabilities, promote digital ethics, and develop transformative solutions for smart sustainable cities.
  - WeGO fosters and improves international exchange, cooperation, project implementation, and learning amongst cities and with their partners.
- 

## STRATEGIC PILLARS

### **BUILDING A CITIZEN-CENTRIC SMART CITIES**

It has become more important than ever for cities to embrace resilience and sustainability at a personal and societal level. WeGO will lead citizen participation in building smart cities by creating opportunities where citizens can be more active and devoted in bringing smart sustainable cities.

### **GEOGRAPHICAL AND SECTORAL SMART CITY DEVELOPMENT**

Each region around the world exhibits very different characteristics and has very different stages and sectoral needs in smart city development. WeGO will expand its region and sector focused smart city initiatives and regional networks to enable knowledge exchange and foster cooperation on smart cities.

### **DIGITAL TRANSFORMATION OF PROGRAMS AND SERVICES**

As the world moves online in the new normal, WeGO will stay ahead of the curve by carrying out a range of webinar series and digitizing new and existing services with a broader group of stakeholders. WeGO will exploit the power of digital to enhance WeGO's services to its members, securing faster, better, and cost-effective outcomes.



# WeGO'S CORE PROGRAMS IN 2022

## WeGO SMART CITY CHAMPIONS

WeGO recruits youth from universities in member cities from all around the world to gain knowledge and build consensus around the future of smart cities. By fostering knowledge exchange and building capacities of youth in the field of urban development, sustainability and smart cities, this flagship program will empower young urban leaders of tomorrow.

Youth participants will be selected to partake in two phases to receive **certificates and awards**:

**PHASE 1 LECTURE SERIES:** APPLY TO JOIN A 6-WEEK LECTURE SERIES ON VARIOUS SMART CITY TOPICS.

**PHASE 2 WORKSHOP SERIES:** ENGAGE IN INTERACTIVE GROUP WORKSHOPS TO DESIGN YOUR CREATIVE SMART CITY.

---

## WeGO SMART CITIES INDEX

The **WeGO Smart Cities Index** invites interested cities to participate in the archive of the world's best smart cities practices. With the collected data and information from the city, WeGO will publish smart city thematic reports and rankings. This Index will enable cities to assess their development stages, benchmark and gain inspiration from other cities around the world.

---

## WeGO NEXUS PLATFORM (FOR MEMBERS ONLY)

WeGO Nexus is an exclusive platform for WeGO members to meet, communicate, and interact with each other. Members can find each other's profiles and discuss key topics of interest in groups. The platform also contains resources for members to build their smart cities, including information on the latest smart city events and other opportunities.



**JOIN WeGO today and be part of an exclusive network and access the most relevant information to pave the way for your smart city journey.**

## WeGO SMART CITY DRIVER



### WeGO ACTIVATOR

Diagnose your city's smart city development stage and learn how to improve.

Complete the WeGO Activator survey to find out where you are in smart city development and learn what solutions could be applied to make your city even smarter.



### SOLUTION FINDER

Search for the right smart city solutions.

- Join our flagship 'Solutions Meet Cities' matchmaking events or schedule an on-demand matchmaking meeting with a partner of your choice.
- Discuss and share your smart city plans with the WeGO network.
- Gain inspiration from smart city best cases from our WeGO members and partners



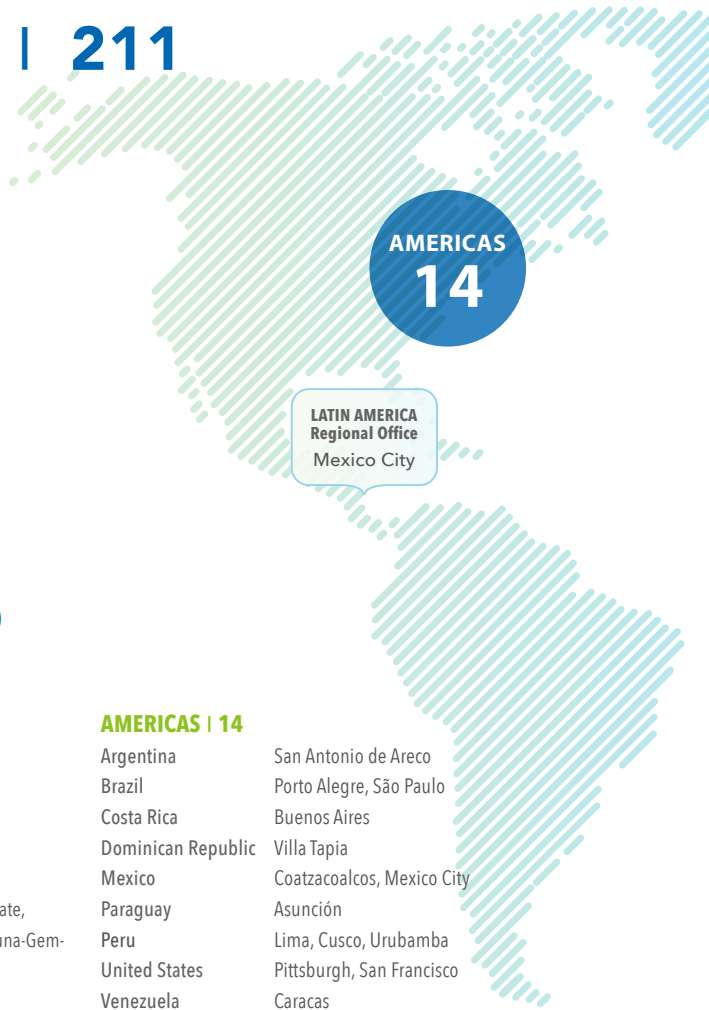
### PROJECT IMPLEMENTER

Reach your smart city goals with project implementation opportunities.

- Share your ready-made project proposal with WeGO and establish direct project partnerships within the WeGO network.
- Become a beneficiary city or solution provider of WeGO Smart Sustainable City Feasibility Study Program.
- Apply for partner smart city funding programs through consultation and support from WeGO.

# WeGO MEMBERS | 211

as of January 2022



## LOCAL GOVERNMENTS | 160

### AFRICA | 47

Cameroon	Andek, Batibo, Tubah
Ethiopia	Addis Ababa
Ghana	Accra
Kenya	Nairobi
Morocco	Rabat
Mozambique	Maputo
Nigeria	Abuja, Calabar, Donga, Gassol, Jalingo, Kaduna State, Karim-Lamido, Kurmi-Baissa, Pupule Yorro, Sardauna-Gembu, Sokoto State, Takum
Rwanda	Kigali
Senegal	Dakar
South Africa	Tshwane
Sudan	East Nile Locality, Elkhawi Locality, Gadarif City, Gadarif State, Gezira State, Hasahisa, Kassala State, Khartoum Locality, Khartoum State, North Kordofan State, River Nile State, Sennar State, Shaikan Locality, South Gezira Locality, Umelgoura Locality, White Nile State
Tanzania	Dar es Salaam
Tunisia	La Marsa, Menzel Jemil, Tunis
Uganda	Kampala
Zambia	Kasama, Lunte
Zimbabwe	Harare

### EUROPE | 17

Belarus	Minsk
Belgium	Brussels
France	Paris
Germany	Berlin, Frankfurt
Netherlands	Rotterdam
Romania	Bucharest
Russia	Magas, Moscow, Ulyanovsk Region, Vladivostok
Turkey	Ankara, Antakya, Beyoğlu, Gaziantep, Malatya, Muğla

### MIDDLE EAST | 8

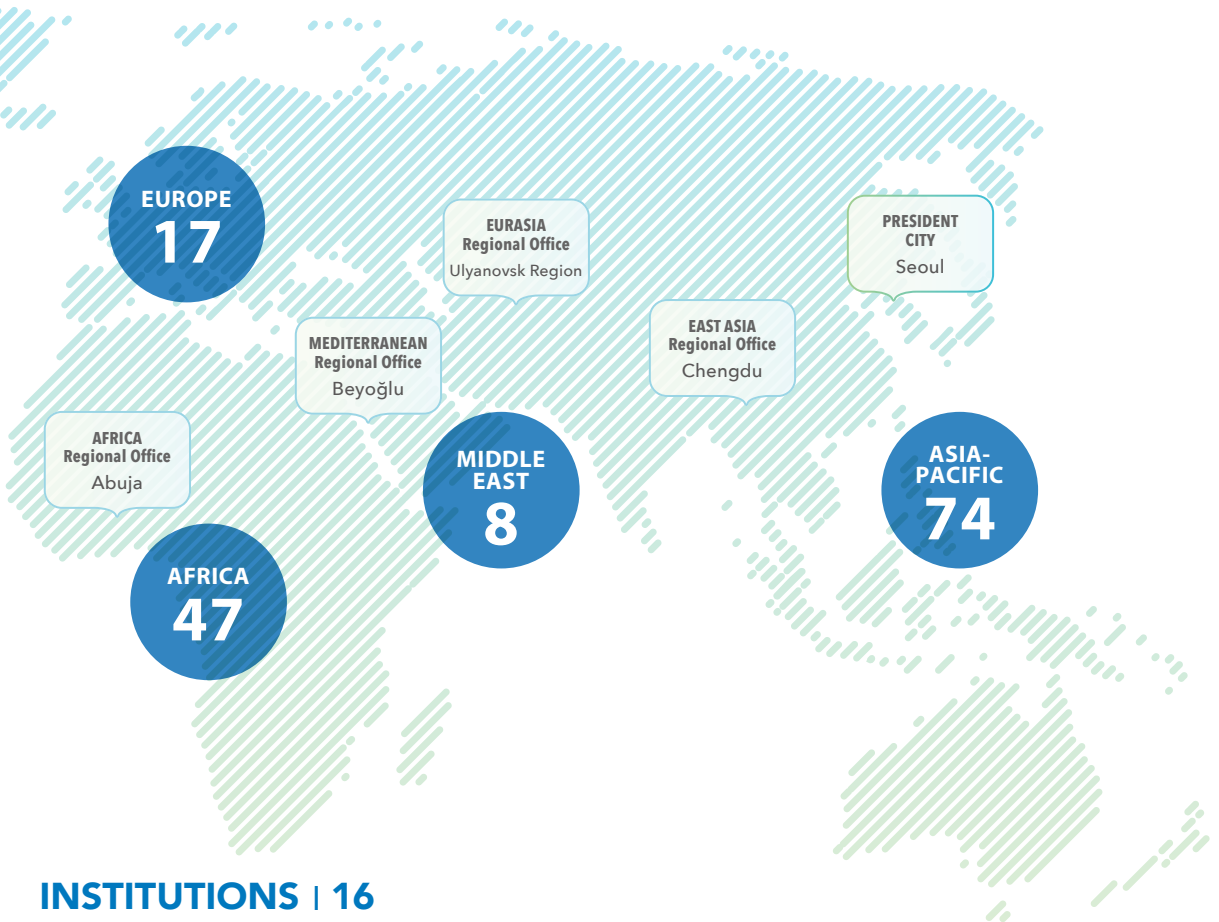
Iran	Isfahan, Shiraz, Tabriz
Iraq	Erbil
Oman	Muscat
Palestine	Hebron, Ramallah
United Arab Emirates	Abu Dhabi

### AMERICAS | 14

Argentina	San Antonio de Areco
Brazil	Porto Alegre, São Paulo
Costa Rica	Buenos Aires
Dominican Republic	Villa Tapia
Mexico	Coatzacoalcos, Mexico City
Paraguay	Asunción
Peru	Lima, Cusco, Urubamba
United States	Pittsburgh, San Francisco
Venezuela	Caracas

### ASIA-PACIFIC | 74

Afghanistan	Ghazni, Kabul, Pul-i-Alam
Azerbaijan	Baku
Bangladesh	Dhaka North, Dhaka South, Rajshahi
China	Chengdu, Dujiangyan, Hong Kong SAR, Ningbo, Zhejiang Province
Fiji	Suva
India	Agra
Indonesia	Bandung, Batam, Bau-Bau, Jakarta, Riau Islands, Serang Regency
Japan	Saga Prefecture
Kazakhstan	Almaty, Nur-Sultan
Korea	Anyang, Gimpo, Goyang, Jeju, Sejong, Seongnam, Seoul
Malaysia	Penang Island, Seberang Perai
Mongolia	Altai, Choibalsan, Erdenet, Sainshand, Ulaanbaatar
Nepal	Bellari, Bhadrapur, Bharatpur, Birgunj, Dharan, Dhulikhel, Itahari, Kathmandu, Kankai, Patharishanishchare, Pokhara, Ramgram, Ratuwamai, Shivasatakshi, Sunawarshi, Sundarharaicha, Sunwal, Tarakeshwar
New Zealand	Wellington
Pakistan	Islamabad, Peshawar
Philippines	Baguio, Cauayan, La Union, Makati, Manila, Quezon City, San Fernando La Union
Sri Lanka	Dambulla, Galle, Matale, Sri Jayawardenapura Kotte
Thailand	Bangkok
Uzbekistan	Tashkent
Vietnam	Da Nang, Ha Noi, Thua Thien Hue



## INSTITUTIONS | 16

Afghanistan	Engineering School at Kabul University
Botswana	Botswana Communications Regulatory Authority
Germany	FIWARE Foundation
Ghana	National Information Technology Agency (NITA)
India	Enactus IIT Delhi
Korea	Korea Internet and Security Agency (KISA), Seoul Digital Foundation (SDF), Seoul Housing & Communities Corporation (SH)
Mongolia	Healthy City Network of Mongolia (HCNM)
Nigeria	African Smart Cities Innovation Foundation (ASCIF), Digital Collaborative Platform, National Information Technology Development Agency (NITDA)
Sudan	National Information Center (NIC)
Switzerland	Solar Impulse Foundation
Tunisia	Bizerte 2050
Uganda	National Information Technology Authority (NITA-U)

## CORPORATIONS | 35



# MEMBERSHIP GUIDELINES

## MEMBERSHIP CATEGORIES

### LOCAL GOVERNMENTS

- Cities and Other Municipalities
- Districts and Other Sub-Municipalities
- States, Provinces, and Other Regions

### CORPORATIONS

- Multinational Corporation (MNC)
- Small and Medium-Sized Enterprises (SMEs)
- Start-ups

### INSTITUTIONS

- Associations and Alliances
- National and Subnational Public Agencies
- Academic Institutions
- Non-profit Organizations

## APPLICATION PROCESS



## ANNUAL FEES

### LOCAL GOVERNMENTS

GDP per capita (USD)	Population ('000)									
	0 - 49	50 - 199	200 - 299	300 - 599	600 - 999	1,000 - 1,999	2,000 - 3,999	4,000 - 6,999	7,000 - 9,999	10,000+
0 - 999	400			500			600		700	
0 - 1,999	400		500			600		700		800
2,000 - 3,999	400	450	500	750	1,000	1,250	1,500	1,750	2,000	2,250
4,000 - 5,999	500	500	700	1,000	1,300	1,600	1,900	2,200	2,500	3,000
6,000 - 7,999	900	1,200	1,500	2,000	2,500	3,000	3,500	4,000	4,500	5,000
8,000 - 9,999	1,600	1,800	2,000	2,500	3,000	3,500	4,000	4,500	5,000	5,500
10,000 - 14,999	2,500	3,000	3,500	4,000	4,500	5,000	5,500	6,000	6,500	7,000
15,000 - 19,999	3,500	4,000	4,500	5,000	5,500	6,000	6,500	7,000	7,500	8,000
20,000+	4,000	5,000	6,000	6,500	7,000	7,500	8,000	8,500	8,500	10,000

### CORPORATIONS

Category	Criteria (No. of Employees Worldwide)	Annual Membership Fee (USD)
Multinational Corporation (MNC)	2000+	8,000
Small and Medium - Sized Enterprise (SME)	500 - 1,999	5,000
	300 - 499	2,500
	1 - 299	2,000
Start-up	21+	2,000
	11 - 20	1,500
	1 - 10	1,000

### INSTITUTIONS

Category	Criteria (GDP per capita (PPP) (USD))	Annual Membership Fee (USD)
Associations and Alliances Includes all international and domestic associations and alliances comprised of member national or subnational local governments, corporations, and institutions focused on smart city and other relevant topics, such as sustainable urban development	0 - 1,999	750
	2,000 - 4,999	1,000
	5,000 - 7,999	1,500
	8,000 - 9,999	2,000
National and Subnational Public Agencies Includes all individual national and subnational government agencies and government entities, including development and corporation agencies, with a mandate to formulate and implement strategies and projects for smart city development and achievement of other relevant goals, such as sustainable urban development	10,000 - 14,999	3,000
	15,000 - 19,999	4,000
Academic Institutions Includes all international and domestic academic institutions, such as universities, think tanks, and research organizations	20,000+	5,000
	Category	Criteria (Number of Employees)
Non-Profit Organizations Includes all international and domestic individual non-profit organizations focused on promoting sustainable urban development	0 - 9	1,000
	10 - 49	2,000
	50 - 99	3,000
	100 - 499	4,000
	500+	5,000

\* GDP per Capita (PPP) is determined by the latest available international financial statistics published by the International Monetary Fund (IMF) while population and the number of employees are determined by the official statistics provided by the entity when joining WeGO.

## GOVERNANCE (Term of 2021-2023)



## THE SECRETARIAT AND REGIONAL OFFICES

The WeGO Secretariat is located in Seoul, the President City of WeGO. It is supported by five (5) Regional Offices in advancing the Organization's mission in their respective regions.



## WeGO ACTIVITIES



## WeGO GENERAL ASSEMBLIES (GA)





**World Smart Sustainable Cities Organization**

**FOLLOW US**

-  WeGovOrg
-  WeGovOrg
-  WeGovOrg
-  World Smart Sustainable Cities Organization
-  <https://we-gov.org/>



**JOIN US**

**WeGO SECRETARIAT**

7F Seoul Global Center, 38 Jongro, Jongno-gu

Seoul 03188, Republic of Korea

Telephone: 82-2-720-2935

Fax: 82-2-720-2939

Email Address: [secretariat@we-gov.org](mailto:secretariat@we-gov.org)

